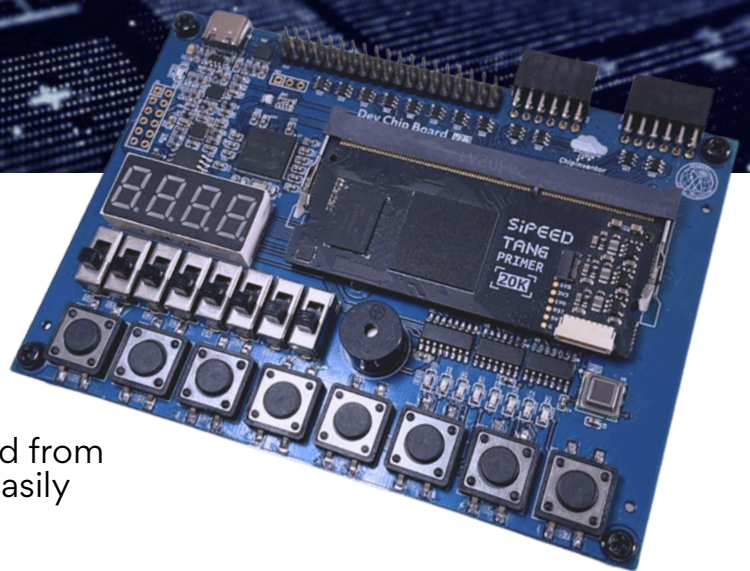


Making your chip project a reality!

Aiming to provide a complete environment for everyone to learn about FPGAs and semiconductor design, we have developed the ChipInventor DevChipBoard.

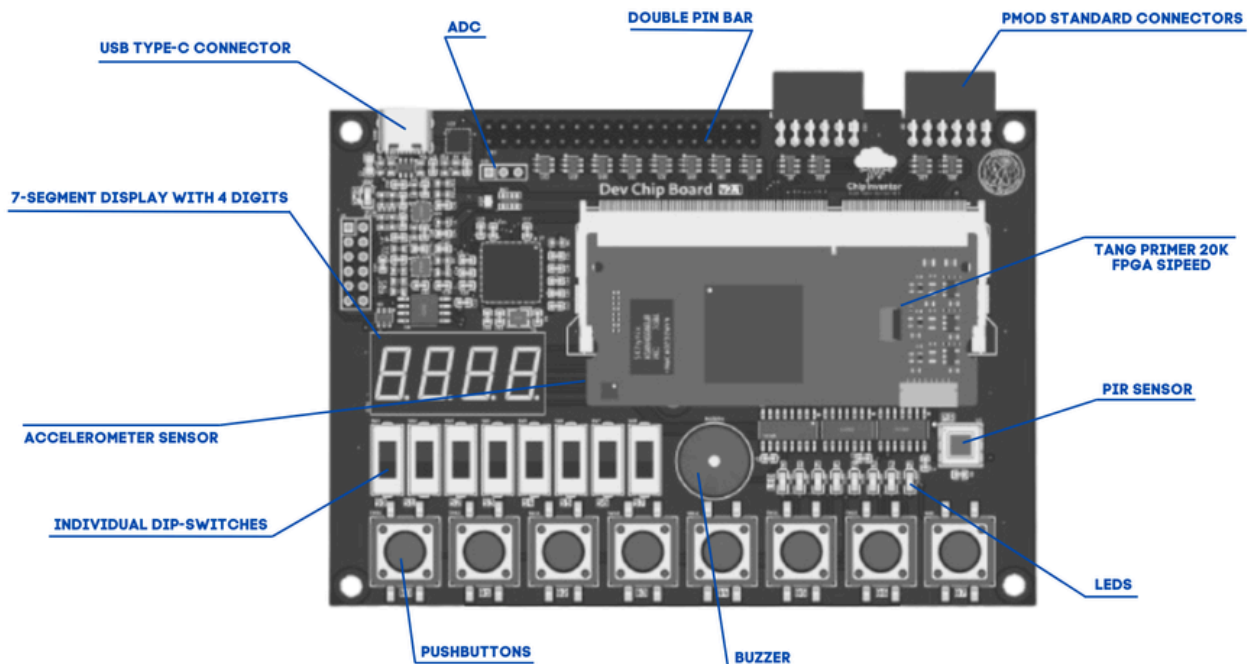
At its core, the affordable and well-documented TangPrimer 20k FPGA board from SiPeed offers 20736 logic units that will easily accommodate medium projects.



Features

It provides pre-made connections and support circuitry for a plethora for the most used sensors and peripherals available on the market, such as:

- 1x FPGA Tang Primer 20k;
- 1x Integrated Engraving System;
- 8x Push Buttons;
- 8x Colored Leds;
- 8x individual Dip-Switches;
- 1x PIR Presence Sensor;
- 1x Passive Buzzer;
- 1x Accelerometer Sensor:
 - Integrated temperature sensor
 - 3x 10-bit ADC converters
- 1x 7-segment display with 4 digits.
- 2x PMOD standard connectors;
- 1x Double pin bar;
- 1x USB Type-C connector



 [SCHEMATIC](#)

 [PERIPHERAL SPECIFICATIONS](#)



Interested?

Access the QR Code for more details about the ChipInventor EDA Platform and how to purchase DevChipBoard v2.2.